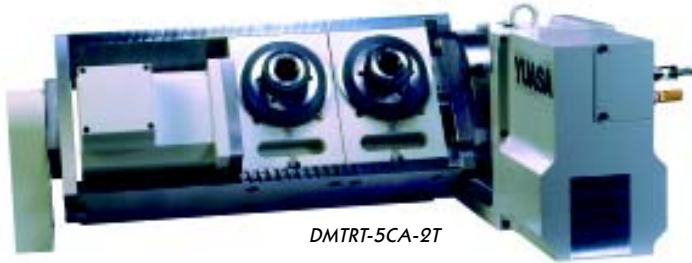




DMTRT 5C STYLE MODELS (MULTI-SPINDLE TILTING)



DMTRT-5CA-2T



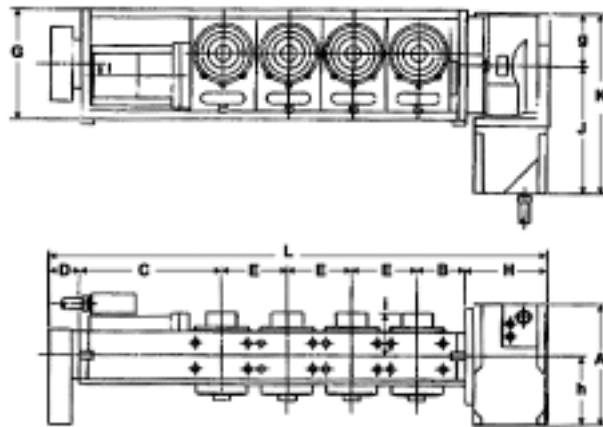
UDNC-M2 Dual-Axis Controller

- ▶ Hydraulic brake option for tilting axis
- ▶ Allowable tilting range from -120°~+120°
- ▶ Heavy duty bearing end support provides smooth turning and outstanding rigidity
- ▶ All the benefits for the standard multi-spindle models with unsurpassed tilting capability
- ▶ Available with UDNC-M2 (Programmable tilt and rotary axis) or as full 4th and/or 5th axis using Fanuc, Mitsubishi or Yaskawa servo motors
- ▶ Home switch on 5C rotary axis
- ▶ Split worm design on tilt axis
- ▶ Double lead worm design on rotary axis

Inch/(mm)

MODEL / DMNC	5CA2-T	5CA3-T	5CA4-T
Threaded Spindle Nose	5C w / 2 3/16" - 10		
Center Height inch (mm)	6.30 (160)		
Max RPM (5C Indexer) (Tilt Axis)	100	66.6	
	33		
Rotational Torque ft.lbs (Kg.m)	65 (9)	58 (8)	54 (7.5)
Tilt Axis Brake Torque ft.lbs (Kg.m)	180		
	352		
Resolution Degrees (5C Indexer) (Tilt Axis)	0.001"		
	0.0005		
Max Load Vertical lbs. (Kg) (Indexer position)	44 (20)	38 (17)	30 (13.5)
Max Load Vertical lbs (Kg) (indexer position)	22 (10)	17 (8)	15 (7)
Positioning Accuracy (5C Indexer) (Tilt Axis)	+/- 20 seconds		
	+/- 10 seconds		
5C Thru Hole Diameter inch (mm)	1.114 (28.30)		
Net Weight lbs. (Kg)	402 (182)	469 (213)	538 (244)

NOTE: All 5CA models include 5C air collet closers as standard.



DIMENSIONAL SPECIFICATIONS

UNIT: inch (mm)

MODEL	A	B	C	D	E	F	f	G
5CA-2T	11.02 (280)	4.45 (113)	12.91 (328)	2.83 (72)	5.91 (160)	11.89 (302)	6.69 (170)	9.84 (250)
5CA-3T								
5CA-4T								
MODEL	g	H	h	l	i	J	K	L
5CA-2T	4.72 (120)	7.68 (195)	6.30 (160)	0.98 (25)	3.94 (100)	13.33 (340)	18.11 (460)	33.78 (858)
5CA-3T								39.68 (1008)
5CA-4T								45.59 (1158)