



VISEDEX 710-164

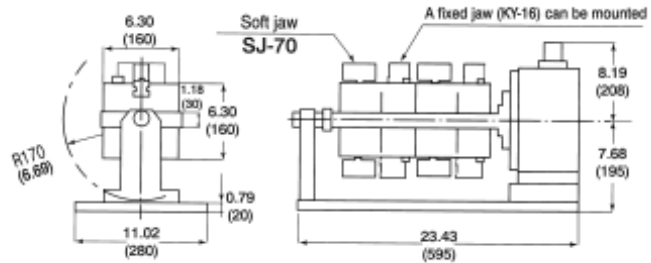
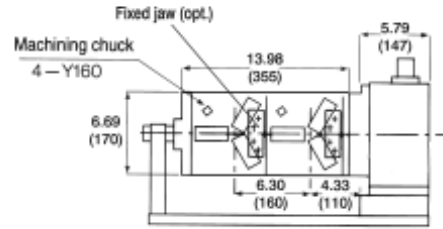
Equipped with:

- ▶ Y-160 machining chucks (4 pcs.)
- ▶ T-handle for machining chuck
- ▶ Handle for manual indexing
- ▶ Sub-plate & bearing end support



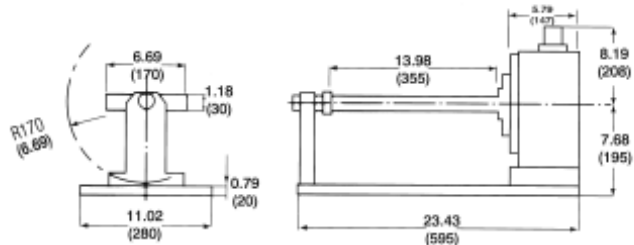
710-164

Inch/(mm)



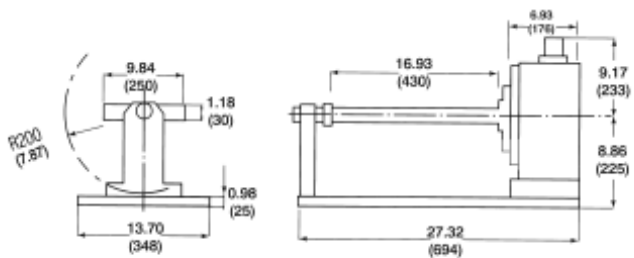
710-201

90° indexing when the index cylinder is pressed once.



710-301

45° indexing when the index cylinder is pressed once.



VISEDEX 710-201 & 710-301

Chuckless type

- ▶ Includes flat fixturing plate
- ▶ Handle for manual indexing (included)



Accuracy:

- ▶ Table center-hole runout 0.0004 (0.01)
- ▶ Table surface runout 0.0004 (0.01)
(Measured 0.59 (15mm) inside the table perimeter)
- ▶ Table surface squareness 0.001 (0.03)
- ▶ Indexing accuracy ±30 seconds
- ▶ Deformation under load002 (0.06)
(Measured at outside edge with 440lb. load)

NOTE: End supports may be purchased separately



710-224