

Mitsui Precision Surface Grinders

MSG-200MH

MSG-205MH

MSG-250M



Mitsui Surface Grinders with everlasting, superlative precision

Our simple motto since the company's foundation:

“To provide our customers with the ultimate, superlative precision machinery.” Mitsui manufactures “M” series manual surface grinders with the same precision and manufacturing process as our high-end model grinders.

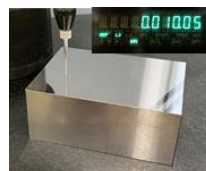
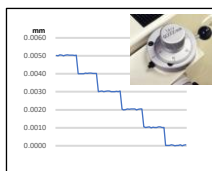


Mitsui's feed precision has reached a submicron territory

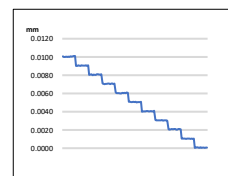
Fine Crossfeed
The micromotion function easily enables even a 0.1µm shift, usually difficult to do with a hand wheel.



Following Precision of Fine Feed
The result of following precision measurements of the grinding stone spindle at 1µm fine feed.



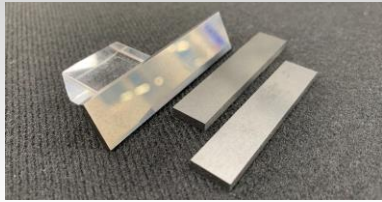
Forward-and-Backward/Right-and-Left Spindle with the Right Angle Precision
Hand feed models are manufactured within the standard of 0.002mm/200mm.



Ten-Step Processing at 1 µm gradation
The result of measurement of ten-step processing at 1 µm gradation
Absolutely precise incisions are made in micromotion.

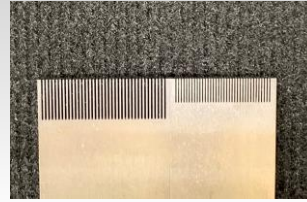
Sample Works

Six-sided Processing of Tooling Die Parts



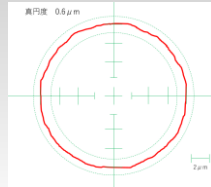
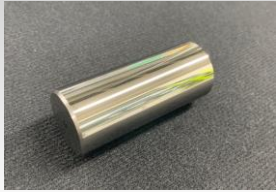
Material: Steel, Carbide
 Dimension: .4" × 1.6"
 Thickness: .08"
 Grinding Accuracy: ±.00004"

Fine Pitch Processing of Connector Core Pin



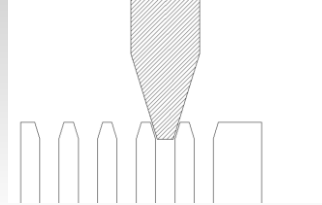
Material: Carbide
 Width: .012"
 Depth: .27"
 Pitch Accuracy: .0001"

Cylindrical Processing Parts



Material: Carbide
 O.D: .78"
 Length: 2.3"
 Roundness: .00002"

Processing of the Tip of Connector Core Pin



Material: HSS
 Thickness: .04"
 Width: .008"
 Corner R: .0012"
 Pitch Accuracy: .0001"

Optional Accessories



Magnescale Digital Readout
 Part No. DRO&DROI



Chuck Control
 Part No. SMART1B



Chuck Control
 Part No. SCV1.5



Coolant Cover
 Part No. CC200IPO



13GAL Stainless Steel
 Coolant Tank w/ Paper
 Part No. MSTP-50



Power Elevation
 Part No. PE



Dust Scoop Assy
 Part No. DS



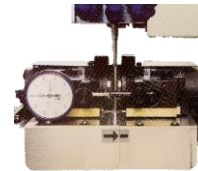
Over The Wheel
 Dresser for 8"
 Part No. OTW8



8" Wheel Guard with
 built-in Dust Scoop
 Part No. WGSP8IPO



Optidress
 Part No. OPTIDRESS



Universal Twin
 Rotary Dresser
 Part No. UTRD



Service Call
 Video Call

Service Call

| Specification | | MSG-200MH | MSG-205MH | MSG-250M |
|---------------|--------------------------------|----------------|--------------------|--------------------|
| Capacity | Table Work Surface | 6×13-1/2" | 6 × 19" | 8×19" |
| Table(C/F) | Movement per Rev.of Hand Wheel | 0.1" | 0.1" | 6mm |
| | Fine Feed Attachment | 0.00005" | 0.00005" | 0.00005" |
| Head | Movement per Rev.of Hand Wheel | 0.05" | 0.05" | 0.05" |
| | Fine Feed Attachment | 0.00001" | 0.00001" | 0.00001" |
| Wheel | Size | 8"×3/4"×1-1/4" | 8" × 3/4" × 1-1/4" | 8" × 3/4" × 1-1/4" |
| | Spindle Speed (50Hz/60Hz) | 2,900/3,460rpm | 2,900/3,460rpm | 2,900/3,460rpm |
| Motor | Spindle | 1-1/3HP 2P V-3 | 1-1/3HP 2P V-3 | 1-1/3HP 2P V-3 |
| Power | Power Supply | 1.5KVA | 1.5KVA | 1.5KVA |
| Floor Space | Width × Length × Height | 58"×46"×71" | 70×46×71" | 73×51×71"mm |
| Gross Weight | | 1,980lbs | 2,090lbs | 2,425lbs |



<https://www.mht-us.com> (USA)

<https://www.mitsui-high-tec.com> (Japan)

64 W. Seegers Road
 Arlington Heights, IL 60005

Tel:(847)593-1634

Fax:(847)593-5760