

# PC-NC Series

## 818PC-NC/525PC-NC (Servo Motor Driven)

## 818PC-NCL/525PC-NCL/300PC-NCL

(Linear Motor Driven)

We will respond to the diverse needs of customers from flat plates to screws and long rotary machining.

Supports various type of Grinding Software

Surface/G-Code/Pitch/Creep

Automatic Dressing Cycle

Flat/Outer R/Inner R/ Taper

Additional unit

Double index device for 5-axis grinding

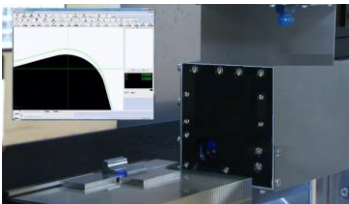


Pin grinding by grinding wheel side

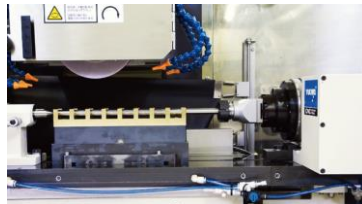


MSG-525PC-NCL

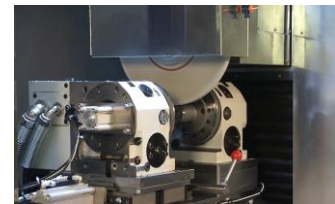
CCD camera on-board measurement



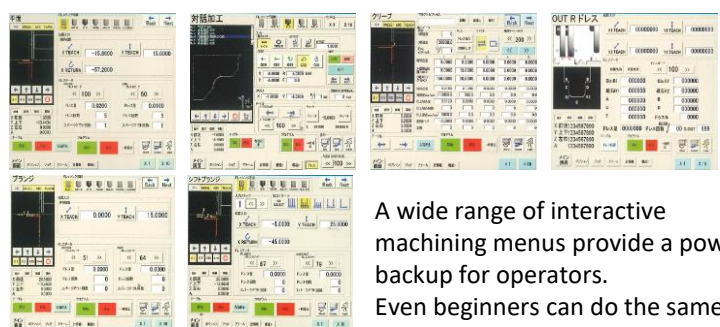
NC index device



Fixed rotation mechanism at both ends



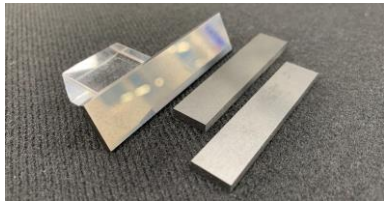
## Operation interface



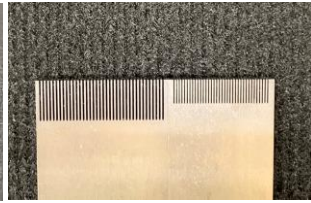
A wide range of interactive machining menus provide a powerful backup for operators. Even beginners can do the same processing as skilled workers.

## Sample of grinding

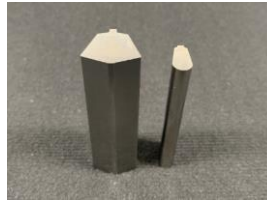
Six-sided Tooling Die Parts



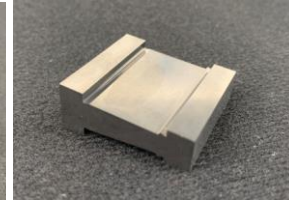
Fine Pitch Connector Core Pin



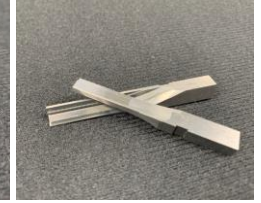
Mold forming Punch



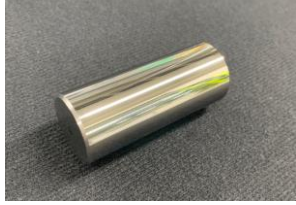
Mold die



IC Lead frame Punch



Mirror surface cylindrical core pin



Standard variant punch



Drawing punch



Micro screw core Pin



Tip drawing



## Optional Accessories



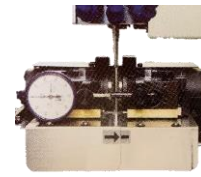
3point Dressing System  
Part No. 3POINT



Rotary Dresser  
Part No. ROTARYDRESS



Optidress  
Part No. OPTIDRESS



Universal Twin  
Rotary Dresser  
Part No. UTRD



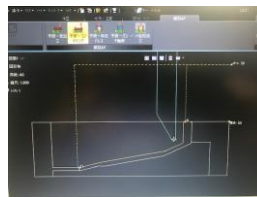
Air Spindle



13GAL Stainless Steel  
Coolant Tank w/ Paper  
Part No. MSTP-50



Dust Scoop Assy  
Part No. DS



Mitsui Auto CAM Software  
Part No. MACS2D

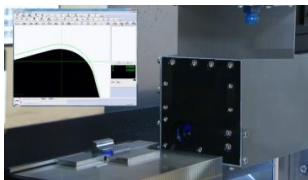


Centerless grinding device



NC Control rotation  
device

## Safety device



CCD camera



Spindle rotation indicator



Automatic Wheel Safety cover



Service Call  
Video Call

※If you want another safety system, please contact us.

## After service

Specifications		MSG-818PC-NC	MSG-818PC-NCL	MSG-525PC-NC	MSG-525PC-NCL	MSG-300PC-NCL
Capacity	Table Work Surface	8 × 19"	8 × 19"	10 × 21-1/2"	10 × 21-1/2"	12 × 24"
Table	Movement per Rev. of Hand Wheel	3-15/16"	3-15/16"	3-15/16"	3-15/16"	3-15/16"
	Table speed(average)	0-50ft/min	0-80ft/min	50ft/min	83ft/min	83ft/min
Head	Movement per Rev. of Hand Wheel	0.3/64"	0.3/64"	0.3/64"	0.3/64"	0.3/64"
	Minimum command increment	0.00001"	0.00001"	0.00001"	0.00001"	0.00001"
Wheel	Size	8 × 3/4 × 1-1/4"	8 × 3/4 × 1-1/4"	8 × 3/4 × 2"	8 × 3/4 × 2"	8 × 1/2 × 1-1/4"
	Spindle speed (50Hz/60Hz)	500-4000rpm	500-4000rpm	500-4000rpm	500-4000rpm	500-4000rpm
Motor	Spindle	1.5kw/2P V3	1.5kw/2P V3	2.2kw/2P V3	2.2kw/2P V3	2.2kw/2P V3
	Power Supply	11KVA	11KVA	15KVA	15KVA	18KVA
Floor Space	Width × Length × Height	100" × 63" × 71"	100" × 63" × 71"	118" × 98-1/2" × 86-1/2"	118" × 98-1/2" × 86-1/2"	127" × 108" × 87"
Total weight	Main unit	2,425lbs	2,425lbs	5080lbs	5080lbs	9720lbs



Mitsui  
High-tec  
Inc.

<https://www.mht-us.com> (USA)

<https://www.mitsui-high-tec.com> (Japan)

64 W. Seegers Road  
Arlington Heights, IL 60005

Tel:(847)593-1634  
Fax:(847)593-5760